

Introduction to GIMP

GIMP (GNU Image Manipulation Program) is a free and open-source raster graphics editor used for image retouching, photo manipulation, graphic design, and digital artwork. It is available on multiple platforms such as Windows, Linux, and macOS and serves as a powerful alternative to proprietary software like Adobe Photoshop.

Downloading and Installing GIMP

1. System Requirements

- Operating System: Windows / macOS / Linux
- Minimum RAM: 4 GB (recommended)
- Processor: 64-bit system
- Disk Space: Approximately 200 MB

2. Steps to Download GIMP

- Open a web browser.
- Visit the official GIMP website <https://www.gimp.org/downloads/>
- Select the appropriate version for your operating system.
- Click on the **Download** button.

3. Installation Process (Windows)

1. Run the downloaded installer file.
2. Select the installation language.
3. Accept the license agreement.
4. Choose installation location.
5. Click **Install** and wait for completion.
6. Launch GIMP after installation.

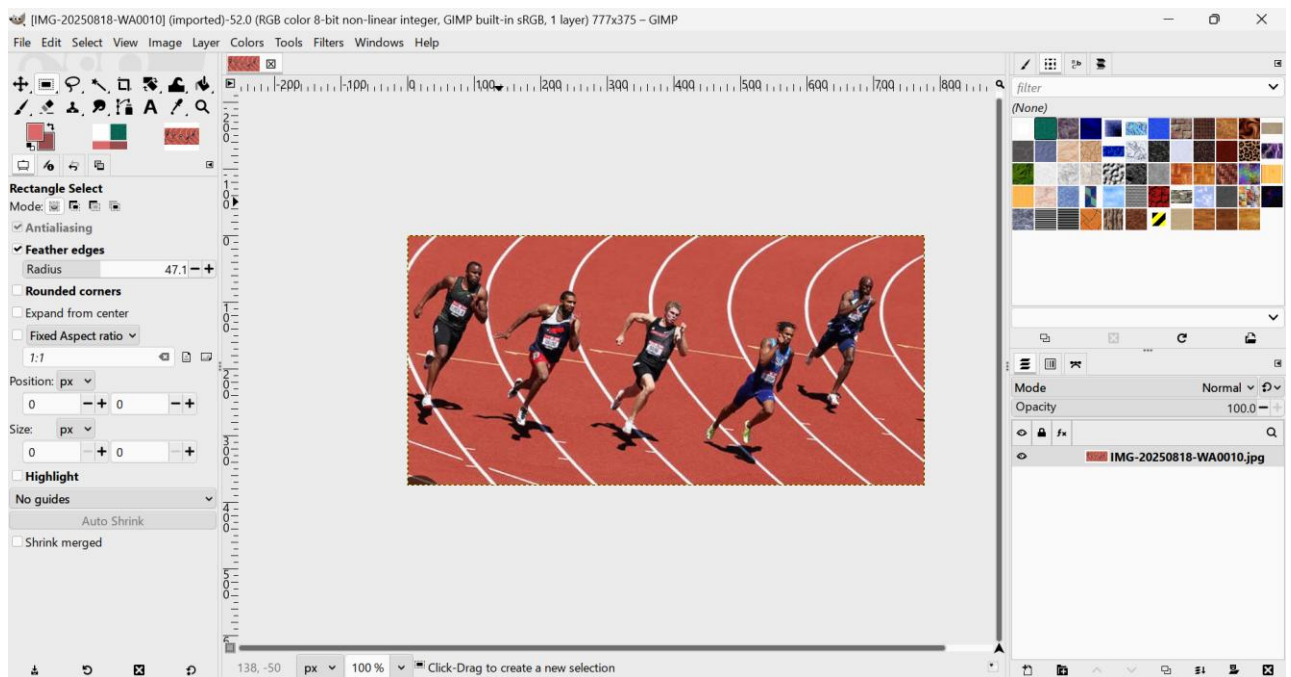
Working with GIMP's Interface

The GIMP interface is user-friendly and highly customizable. It is mainly divided into different components that help users perform editing tasks efficiently.

Main Components of GIMP Interface

- Menu Bar
- Toolbox
- Image Window
- Dockable Dialogs
- Status Bar

GIMP supports **Single-Window Mode** and **Multi-Window Mode**, allowing users flexibility in workspace management.



Toolbox in GIMP

The **Toolbox** contains a collection of tools used for image editing and manipulation.

Categories of Tools

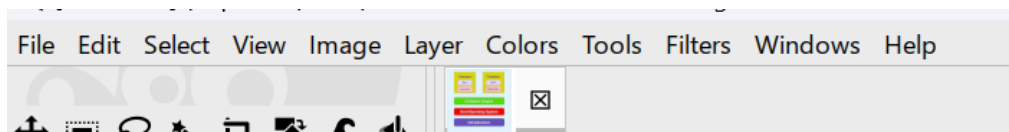
- **Selection Tools:** Rectangle Select, Ellipse Select, Free Select
- **Paint Tools:** Pencil, Brush, Airbrush, Eraser
- **Transform Tools:** Move, Scale, Rotate, Flip
- **Color Tools:** Color Picker, Bucket Fill, Gradient
- **Other Tools:** Text Tool, Zoom Tool, Measure Tool

Each tool has specific options displayed below the toolbox for detailed control.

Windows and Menus in GIMP

Menu Bar

The Menu Bar provides access to all commands and features in GIMP.



Important Menus

- **File:** Open, Save, Export images
- **Edit:** Undo, Redo, Preferences
- **Select:** All, invert, float, by color
- **View:** Zoom, display modes
- **Image:** Image size, canvas size, scale image, transform
- **Layer:** New layer, Duplicate layer
- **Colors:** color temperature, saturation, color balance, invert
- **Filters:** blur, noise, edge-detect, enhance
- **Windows:** Dockable dialogs, toolbox, single window-mode
- **Help:** help, user manual, about GIMP